

# RURAL HEALTH CONNECT

Improving the Health of Rural Communities

## IN THIS ISSUE:

- What's New
  - HHS
  - OPCRH Annual Report
  - CAH Community Profiles
- Upcoming Events
  - RHAU Conference
  - Rural Photo Contest
- OPCRH Program Updates:
  - Health Systems Support
  - Workforce Development
- Statewide Announcements
  - San Juan Hospital
  - Cedar City Hospital
  - Getting to Zero Plan
- Webinar Opportunities
  - Utah Medical Cannabis Program
  - Nurse Apprenticeship
- Funding Opportunities
- Announcements/Reports from:
  - RHHub
  - HRSA
  - 3RNet



## What's New

### HHS awards more than \$85 million to expand oral health care access

HHS recently awarded more than \$85 million to 298 health centers to expand oral health service capacity through new infrastructure enhancements. "These are the first awards HRSA has ever made solely for health centers' oral health care infrastructure, and they will support better access to oral health services in communities across the country, including underserved urban and rural areas," says HHS Secretary Alex Azar. The awards will support physical and organizational infrastructure investments for health centers, such as minor alteration and renovation to modernize existing facilities, purchase and installation of dental and radiology equipment, training and consultation to increase oral health integration, and the purchase of mobile dental units to increase access to oral health care in hard-to-reach communities.

# Office of Primary Care and Rural Health Annual Report

The Office of Primary Care and Rural Health has released its annual report for 2018-2019. The report is a summary of OPCRH's federal and state programs, strategic objectives, and a financial overview of the state and federal programs the OPCRH team administers.

[To access the report, please follow the link here.](#)

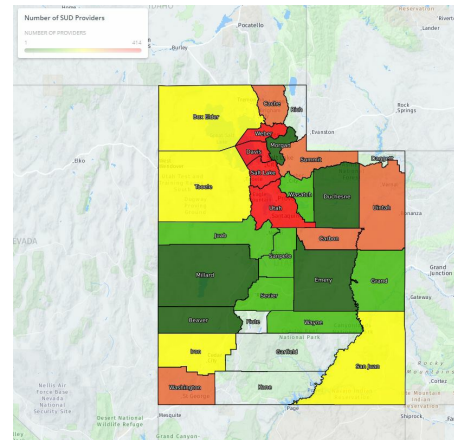
## Critical Access Hospital Community Profiles

The Critical Access Hospital (CAH) Community Profiles provide an up-to-date view of the overall health of a CAH hospital's service area population and a measurement of general population health and community specific health outcomes. The results of this report can assist in identifying poor health outcomes in a hospital's surrounding community and guide decisions about where to focus resources.

If you are a Critical Access Hospital and would like to read your profile, please follow the link [here](#).

## OPCRH Office Highlight:

Each month the OPCRH team highlights a map or project in our office. This month, we're highlighting the Utah Substance Use Disorder Map that was developed by the Utah Department of Health and provides a state level view of the number of SUD providers, patients authorized by SUD providers, and provider locations. To access the map, please follow the link [here](#).



## Upcoming Events

### Rural Health Association Conference

"Building Partnerships for Rural Well-Being"

The well-being of communities and individuals is complex and requires collaboration through effective partnerships that address multiple factors that affect health such as social, financial and environmental. Rural communities have unique challenges, yet great opportunities to foster partnerships and collaborations for improved health



and well-being.

Hospitals, clinics and providers often need community resources to support their patients to improve health. For example pre-diabetes and diabetes education, opioid dependency resources, access to fresh fruits and vegetables or physical activity and social connections. This conference will address how to connect community resources, engage the community at large, and develop effective partnerships.

*April 10, 2020  
St. George, Utah.*

[For more information and registration, please click here.](#)

## National Rural Health Week Photo Contest

Each year for National Rural Health Week, the Office of Primary Care and Rural Health judges a photo contest based on creativity, originality, photo quality, and how well the pictures communicate the concept of "rural." Photo submissions opened *September 1, 2019*. If you have any photos you would like to submit, please send them to [opcrh@utah.gov](mailto:opcrh@utah.gov).

For more information, and to view last year's winning photos, please follow the link [here](#).



## OPCRH Program Updates

### HEALTH SYSTEMS SUPPORT

- The OPCRH team is establishing the *Utah Rural Veteran Coalition (URVC)* to collaborate on care coordination and share resources for Utah's rural veterans. If you would like more information on the

### WORKFORCE DEVELOPMENT

- **Reminder:** State Primary Care Grant Program progress reports are due **October 10, 2019**. The progress reports are available [here](#). **You will need your contract**

URVC, please email  
opcrh@utah.gov.

- **Save the Date: April 9, 2020**, OPCRH is sponsoring a workshop for **Rural Health Clinics** and will cover survey preparedness, billing and coding. This is in conjunction with the RHAU conference on April 10 in St. George, Utah.

number to use this  
option.

- The **auto-HPSA update** is complete and the portal for all auto-HPSA points of contact is live. If you have any questions or concerns, please contact **Holli Mills** [hmills@utah.gov](mailto:hmills@utah.gov).
- We are looking for interested providers, administrators, and others who would be willing to serve on the **review committee** for one of our state funded programs. For more information, or to indicate your interest, please [click here](#).

## Statewide Announcements

### San Juan Health Awarded the '*Best Practice Recipient-Patient Satisfaction*' by the National Rural Health Association

The 20 highest-ranked critical access hospitals (CAHs) in the country, as determined by The Chartis Center for Rural Health, were recently announced by the National Rural Health Association (NRHA). An awards ceremony will be held during NRHA's Critical Access Hospital Conference in September in Kansas City, Mo. The determining factors for the Top 20 CAHs were based on the results of the Hospital Strength Index and its eight indices of performance: inpatient market share, outpatient market share, quality, outcomes, patient perspectives, cost, charge, and financial stability. This elite group of hospitals was selected from The Chartis Center for Rural Health's 2019 Top 100 CAH list, which was released earlier this year.

To view the entire list, please follow the link [here](#).

### Cedar City awarded Top 20 Rural Community Hospital

The National Rural Health Association recognizes the Top 20 Rural Community Hospitals from the list of the Top 100 RCHs as determined by The Chartis Center for Rural Health. The 20 overall winners have achieved success based on the Hospital Strength Index, a nationwide hospital rating system that evaluates rural perspective payment system

(PPS) hospital market, value-based and financial measures. The Top 20 RCH winners are honored annually during a luncheon at NRHA's Annual Rural Health Conference and Rural Hospital Innovation Summit.

To view the list, please follow the link [here](#).

## Utah's Getting to Zero Plan

The Prevention, Treatment, and Care Program within the Utah Department of Health is developing and implementing Utah's Getting to Zero Plan to end the HIV epidemic. The program is convening a work-group of healthcare providers to provide guidance and expertise on the clinical aspects of Utah's Getting to Zero Plan.

## 'Organized Chaos'

How a small-town in Utah treated 19 bus crash patients. For a link to the news article, please click [here](#).

## Webinars

### Rural Suicide Prevention Toolkit



The Rural Suicide Prevention Toolkit compiles evidence-based and promising models and resources to support organizations implementing suicide prevention programs in rural communities across the United States. The modules in the toolkit contain resources and information focused on developing, implementing, evaluating, and sustaining rural suicide prevention programs. There are more resources on general community health strategies available in the [Rural Community Health Toolkit](#).

[To access the toolkit, please follow the link here.](#)

### A New Era: Registered Nurse Resident Apprenticeship



There are many benefits to transition

support for new graduates, however implementation of programs continue to be challenging. Cost remains a major barrier. Currently there are limited funds available to support the transition of new nurses into practice. At the federal level, there has been a large push for utilization of apprenticeships to prepare workers to fill both existing and newly created jobs and prepare workers for the future. Is it possible this could be the funding source nursing has been looking for to allow for continued development of their nursing workforce beyond their formal education?

[To access the webinar, please follow the link here.](#)

## Utah Medical Cannabis Program 4-Hr Required Course



This course introduces the reader to the endocannabinoid system and its interaction with the components of the cannabis plant, and addresses administration, therapeutic use, drug metabolism, physiologic and cognitive effects, potential risks, and drug interactions.

The use of marijuana in obstetric patients, pediatric patients, adolescent patients and elderly patients is discussed in detail. In addition, the health effects of marijuana and cannabinoids in epilepsy are reviewed. Important considerations for patients with ischemic heart disease, hepatic disease, psychotic illness, and those with a history of drug dependence are provided.

This course also informs the reader about the legal and medical considerations in the recommendation of medical

marijuana, and addresses the parts of H.B. 3001, including the Utah Medical Cannabis Act, that would be of interest to a Utah healthcare provider.

For more information about the course, please follow the link [here](#).

## Funding Opportunities

Please check our website for updated funding opportunities. You can find the table by following the link [here](#).

## National Organizations

[Human Services to Support Rural Health](#)

[Oral Health in Rural Communities](#)

[Overdose Data to Action \(RFA-CE19-1904\)](#)

[HRSA US Fact Sheet by State](#)

[Rural Health Care Professional Job Posting](#)



### Find Us

3760 South Highland Drive  
Suite 361C  
SLC, UT 84106

### Call Us

Office: 801-273-6677  
Fax: 801-273-6512

### Email Us

opcrh@utah.gov



The OPCRH provides support to our stakeholders and clients in the form of hands-on support, economic impact analysis, research, community health needs assessments, and healthcare workforce needs assessment. We also provide technical assistance and pertinent information on student loan repayment programs and grant opportunities

If you would like to be a part of our newsletter in the future and/or would like to

submit a success story, announcement, or communicate any other information to us or your rural health partners, please contact Colton Gordon Program Specialist 801-273-6618, [coltongordon@utah.gov](mailto:coltongordon@utah.gov)

Subscribe to this Newsletter