

RURAL HEALTH CONNECT

Improving the Health of Rural Communities

IN THIS ISSUE:

- What's New
 - NOSORH
 - Who's Going to Take Care of these People?
 - Summer First Aid Kit
- Upcoming Events
- OPCRH Program Updates:
 - Health Systems Support
 - Workforce Development
- Statewide Announcements
 - Comprehensive Dental Care
 - Utah Substance Resource Guide
 - Utah Census
- Webinar Opportunities
 - Improving Clinic Flow
 - Ambulatory Commitment to Value
 - NOSORH Grant Writing Institute
 - SAMHSA Improving Cultural Competency for Behavioral Health Professionals
- Funding Opportunities
- Announcements/Reports from:
 - RHHub
 - HRSA
 - 3RNet



What's New

NOSORH Opioid Resources for Providers Fact Sheet

The Fact Sheet provides information and education including examples of tools and potential mentoring opportunities for those rural healthcare providers beginning to provide or providing substance use disorder treatment services.

The resource is designed to be used "at your fingertips." Let it live on the home screen of your desktop, laptop, tablet or phone for easy access to these user friendly resources.

You can find the fact sheet [here](#).

'Who's going to take care of these people?'

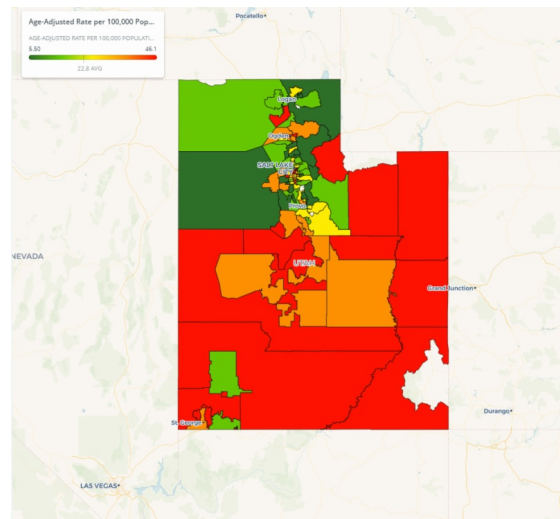
In an article written and produced by the Washington Post, we look into the plight of rural hospitals across the country and how hospitals are struggling to provide for their rural patient population. This is a detailed article about the first hand struggles of a small rural hospital in Fairfax, Oklahoma showcasing the financial, operational, and personal struggles of working in a rural hospital that is barely staying alive. To read the article, please click [here](#).

"What's in your summer first aid kit?"

In an article published in the Deseret News, few people think about the health of rural hospitals in the United States, but many who recreate in Utah's wilderness areas should be concerned about the health of Utah's rural hospitals. Many rural hospitals around the country are shuttering their door's as resources and support dwindle. Utah has had success in keeping all 21 rural hospitals open despite budget cuts, but daily struggles face many rural facilities as they struggle to stay open. To read the article, please click [here](#).

OPCRH Office Highlight: Utah Suicide Rate

Each month the OPCRH team is highlighting a map or project in our office. This month, we're highlighting the Utah Suicide Rate map. Suicide rates were found to be significantly higher in rural communities in Utah compared with urban communities. To access the map, please follow the link [here](#).



Upcoming Events

There are no scheduled events.
Happy 4th of July and Pioneer Day!

OPCRH Program Updates

[HEALTH SYSTEMS SUPPORT](#)

[WORKFORCE](#)

- Thank you for your participation in the **8th Annual Rural Hospital Administrators Summit**
- The **West Region FLEX Meeting** was held in Dove Mountain, AZ. For links to the presentation, please click [here](#).
- For **CAH Quality Managers**, there is a call with Linda Egbert at Comagine Health on 7/18 from 9am to noon.
- For anyone who missed the **Lean Six Sigma webinar series**, please contact our office for the recordings.

DEVELOPMENT

- 43 agencies have been awarded funding from the **State Primary Care Grant Program** for FY 2020.
- There is still funding available for the **Rural Physician Loan Repayment Program**. Click [here](#) to apply.
- A new **Primary Care Geographic HPSA Designation** has been approved for a portion of **Uintah County**
- The OPCRH has filled **eight (8) J-1 Visa Waiver** slots this year. Click [here](#).

Statewide Announcements

Comprehensive Dental Care Improves the Efficacy of SUD Treatment and Improves Mental Health

The University of Utah has published a report finding that comprehensive dental care improves the efficacy of substance use treatment and improves overall mental health. The study found that dental care treatment improves outcomes for both male and females with high-severity and chronic substance abuse disorders.

You can find a link to the news article [here](#), and the research article [here](#).

Utah's Substance Abuse Resources by County

KSL News has produced a comprehensive list of substance abuse resources and referral agencies in each county in Utah.

To access the list, please click [here](#).

State of Utah Census

The state of Utah is attempting to get a complete count of Utah residents for the U.S. Census in 2020 and will be administered online for the first time. In 2010, there was only a 75% initial response rate to the

census questionnaire.

In the past, it has always been difficult to count university students, isolated or rural populations, minority, and homeless populations. This will be even more challenging now that the survey is administered online as more than 73,000 of Utah households have no internet access at home.

Please take a moment to view this brief video that explains the importance of an accurate census and think about ways you can help our state increase participation. We all need to do our part to impress upon everyone in our circle of influence how important it is to provide this information.

Census 2020 [video](#)

Webinars

Improving Clinic Flow

Improving Provider Wellness
Without Adding Costs



There is no one size fits all approach to improving clinic flow. University of Utah Value Engineers will work with you and your team to personalize a plan to improve efficiency and outcomes for your clinic. You will work side by side with our team of Value Engineers to address the needs of your clinic.

What you'll learn:

- How to optimize the provider/medical assistant relationship
- How to improve the efficiency and outcomes through process standardization

What you'll do:

- Attend six clinic flow learning

sessions through video conference

- Collaborate with highly skilled Value Engineers to observe, analyze, and implement a personalized clinic flow system
- Lead your clinical staff and define clear expectations to ease clinic flow
- Schedule three one-on-one mentoring sessions with the Value Engineers

[For more information, please click here.](#)

Ambulatory Commitment to Value



Who can participate?

This offering is available to staff and providers at ambulatory outpatient care centers throughout the Mountain West. The audience typically includes executive leaders and practicing clinicians of various levels (physicians, nurses, technicians, etc.).

- A monthly webinar offering value-driven topics for ambulatory practices throughout the Mountain West
- A new topic is presented on the second Tuesday of every month from noon – 1:00 pm MST
- Sessions are held live via interactive video-conference, and recordings are posted Online

[For more information, please click here.](#)

NOSORH Grant Writing Institute

Registration is now open for the NOSORH Grant Writing Institute (GWI). GWI features a series of nine online learning sessions covering every aspect of grant writing with a unique rural health focus. The series is intended for beginners seeking to gain the skills to research and draft winning proposals from various agencies.

Class size is limited and registration deadline is **July 9th**. Group discounts are available. Sign up four students and get the 5th one free.

[Register Here.](#)

Improving Cultural Competency for Behavioral Health Professionals

SAMSHA

Cultural and linguistic competency is recognized as an important strategy for improving the quality of care provided to clients from diverse backgrounds. The goal of this e-learning program is to help behavioral health professionals increase their cultural and linguistic competency.

- In Course 1, **An introduction to cultural and linguistic competency**, you'll learn what culture has to do with behavioral health care.
- In Course 2, **Know thyself – Increasing self-awareness**, you'll learn how to get to know your cultural identity and how it affects your work with clients.
- In Course 3, **Knowing others – Increasing awareness of your client's cultural identity**, you'll learn how to get to know your client's cultural identity.



NOSORH

National Organization of
State Offices of Rural Health

SAMHSA

Substance Abuse and Mental Health
Services Administration

- In Course 4, Culturally and linguistically appropriate interventions and services, you'll learn how to build stronger therapeutic relationships with clients from diverse backgrounds.

To access the webinar, please click [here](#).

Funding Opportunities

Please check our website for updated funding opportunities. You can find the table by following the link [here](#).

National Organizations

[Human Services to Support Rural Health](#)

[Oral Health in Rural Communities](#)

[Overdose Data to Action \(RFA-CE19-1904\)](#)

[HRSA US Fact Sheet by State](#)

[Rural Health Care Professional Job Posting](#)



Find Us

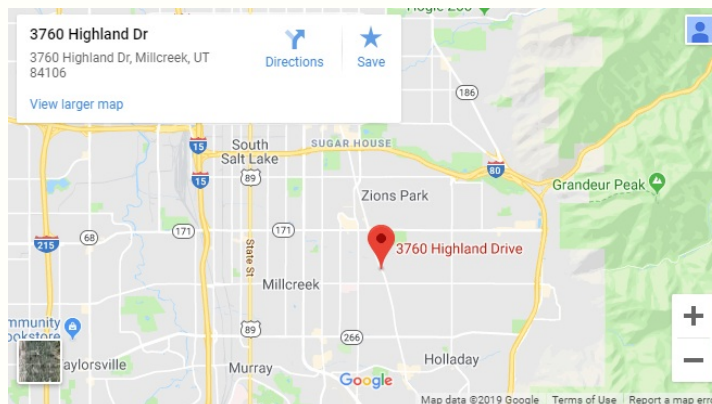
3760 South Highland Drive
Suite 361C
SLC, UT 84106

Call Us

Office: 801-273-6677
Fax: 801-273-6512

Email Us

opcrh@utah.gov



The OPCRH provides support to our stakeholders and clients in the form of hands-on support, economic impact analysis, research, community health needs assessments, and healthcare workforce needs assessment. We also provide technical assistance and pertinent information on student loan repayment programs and grant opportunities

If you would like to be a part of our newsletter in the future and/or would like to submit a success story, announcement, or communicate any other information to us or your rural health partners, please contact Colton Gordon Program Specialist 801-273-6618, coltongordon@utah.gov

Subscribe to this Newsletter